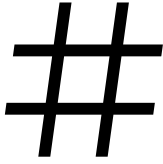




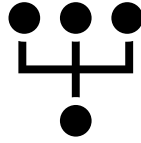
RELEASE NOTES: AE VERSION 7.0.0

- [AT A GLANCE](#)
- [WHAT'S NEW](#)
- [FIXED ISSUES](#)
- [SECURITY ENHANCEMENTS](#)
- [KNOWN ISSUES](#)
- [CONTACT DETAILS](#)

Release Specifications



Version: 7.0

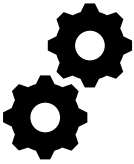


Type: Major

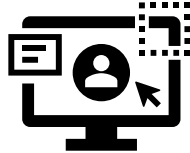


Date: 7/7/2021

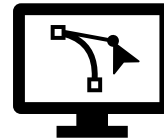
Release Artifacts



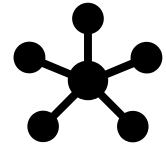
AE Engine
WAR



AEUI
WAR



Process Studio*
Zip



Integration
WARS

* AutomationEdge Server V7.0.0 is compatible only with Process Studio V 7.0.0 so updating Process studio is a mandatory step

Browsers Supported for AEUI



57 & above



80 & above



11[#]



52 & above

[#] IE for AEUI will be supported only up to Version 7.0 of AE

What's New?!



For better understanding a feature, [*GUIDE NAME* | *PAGE NUMBER*] of the current version of guide has been provided after the points (wherever applicable) for the reader to refer to.

➤ Process Studio:

- Developers can now verify their Processes and Workflows to check for any issues before execution [**Process Studio User Guide | 83**]
- Breakpoint conditions can now be viewed even while debugging a workflow [**Process Studio User Guide | 125**]
- Developers can now easily change workspace without having to manually restart the Process Studio to do so [**Process Studio User Guide | 34**]
- Search functionality has been enhanced even further with ability to search across *Workspace(s)*, save search filters, etc. [**Process Studio User Guide | 127**]
- The startup flow for Process Studio has been optimized for a smoother and seamless login experience
- Multiple legacy and unused components from Process Studio have been removed for an improved performance and ease of use
- Process Studio startup screen has been revamped and a progress bar has been added to help developers understand the current state while loading the application

➤ AutomationEdge Server (Engine & UI):

- Enriching AutomationEdge catalog even further to support more data types and logical grouping in runtime parameters for the workflows [**User Guide | 271**]
- Introducing File management for Tenant Admins enabling them to upload files at the *Agent* and *Workflow* level [**User Guide | 436**]
- Users with the *User Admin* role will now be able to manage *Tenant Policy* and other users with the same role
- User accounts in *Dormant* state can now be directly disabled without having to enable them first
- Introducing assignments for *Agent Controllers* for a tighter control over *Agents* [**User Guide | 263**]
- *Plugin* release information can now be viewed from the **Plugins** tab in AEUI [**User Guide | 404**]
- For administrative ease, workflows which need to be executed sequentially are now automatically marked as *Sequential* at the time of creation or editing, hence eliminating complications arising from running sequential workflows parallelly by mistake
- AutomationEdge usernames can now have spaces between them. The same support has been added for LDAP authentication too
- In case of Agent controllers, the time for which the password is stored in Windows keystore for the purpose of connecting to the required machine is now configurable [**User Guide | 246**]
- Object ID column is now visible by default in Audit Logs for ease of compliance
- The **Resources** tab (Available only to Cloud Customers) has been redesigned for better accessibility and access of resources
- Audit Log records for *SYSADMIN* tenant are now purged as a part of *Purging* functionality [**System Administrator Guide | 246**]
- Workflow Containers are no longer supported from this version of AutomationEdge

➤ Integration Service

- Ability to add notification for different operations like Creation, Update or Deletion performed on the Integration service [**User Guide | 476**]



Fixed Issues

The following issues have been fixed in this release:

- Developers could not open workflows that had a disabled error-handling hop
- Process Studio would display an incorrect message of plugin changes on Plugin Sync in some scenarios
- Developers could rename and/or delete their current *Project* folder while using the *Save As* option from File menu for a *Process* or a *Workflow* in Process Studio
- While using a *Workspace* on a shared location, developers could not choose files for the *Workflow/Process Executor* steps or choose resources while publishing a *Workflow* from within the *project*.
- Developers could not debug a *Workflow* again without restarting Process Studio, if they had previously closed the *Workflow* during debugging
- Process Studio would incorrectly show plugins of incompatible framework version
- Recent history button for *Search* functionality in Process Studio did not work as expected
- Process Studio would attempt to upgrade itself despite the absence of required directories resulting into upgrade failure
- *Change Password* option was not accessible to some users intermittently in AEUI.
- Some users could not reset their passwords while using the *Change Password* functionality
- Step names would not get updated for existing plugins when an updated plugin was uploaded with changes in the step name
- Users would get an error message when trying to download Process Studio from **Process Studio** tab, if a user with *System Administrator* role had set an invalid name for the same while uploading it in the **Artifacts** tab
- *Agents* could not be started from AEUI if the start activity had failed previously for that same *Agent*
- Took longer time to load the **Requests** tab when there were multiple requests marked for termination for some of the users
- Custom reports with data containing non-supported/special characters like non-breaking space, faced an issue while downloading the report of PDF type
- In some cases, the *Integration service* did not pass on the required error generated by AutomationEdge upon request submission, to the request initiating system



Security Enhancements

- In case of multiple active sessions for a user, if the user changes their password in any of the sessions, all other sessions will now be immediately invalidated forcing the user to log in again for every session with the new password
- All active sessions for a user are now invalidated if that user's role is changed.



Known Issues / Limitations

AutomationEdge Server (Engine & UI):

- Workflows having *Send Email* step with Asynchronous option checked will not be able to complete their execution if an attachment is present
- User can select an earlier date than the starting date of the schedule as End date while editing an already created schedule
- The *Time Zone* option is not supported for Integration type configuration
- Copy Query option in Add/Edit Templates in Reports tab on AEUI does not work for IE browser.
- While Downloading Requests from AEUI, Created and Completed dates need to be formatted as 'Date' in Microsoft Excel in the downloaded CSV file.
- SSO authentication is not supported for users with *Sysadmin* role
- SSO authentication is supported only for secure sites (https). In addition, SSO can also be utilized with a domain name – irrespective of secure(https) or insecure(http) site on Google Chrome browser. For example, SSO authentication will not work on <http://192.168.0.1:8080/aeui> but will work on <https://mydomain:8080/aeui> on Chrome.

AutomationEdge Agents:

- If *Proxy => Automatic Proxy Setup => Automatic Detect Settings* under Windows *Network and Internet* settings is toggled On, it leads to failure in registration of the newly downloaded agents which are using automatic proxy settings.
- Agents will acquire Tenant level proxy settings (If Any) during upgrades discarding the Agent level proxy settings. The required changes need to be done manually
- Agent restart feature is not supported on Linux based OS

AutomationEdge Process Studio:

- Process Studio may not function properly in case there are any spaces in the Process Studio installation path
- In case of my multiple hops from *Workflow Executor* step, if you delete any one of those hops, all other hops will also need to be deleted and reconnected to ensure the successful workflow execution
- Version Control has been revamped and being rereleased in Beta state.
- SSO based authentication is not supported in Process Studio on Linux for this release
- In-Plugin help is not supported in Process Studio on Linux for this release
- Existing workflows will not open if Process Studio Distribution folder path has any special characters or spaces.
- MacOS support for Process Studio is currently suspended until further notice
- Desktop/Surface based UI Automation is not supported in Linux based OS
- In some cases, RDP enabled requests may be stuck in *Execution Started* state for while despite terminating them



Contact Details

AutomationEdge Technologies Inc



General: info@automationedge.com

Support: support@automationedge.com

Trainings: training.support@automationedge.com



Website: <https://automationedge.com>



India: +91-20-6632-1000

USA: +1-281-220-1057