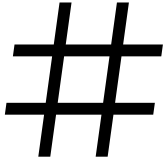




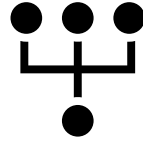
RELEASE NOTES: AE VERSION 5.6.7

- [AT A GLANCE](#)
- [WHAT'S NEW](#)
- [FIXED ISSUES](#)
- [SECURITY ENHANCEMENTS](#)
- [KNOWN ISSUES](#)
- [CONTACT DETAILS](#)

Release Specifications



Version: 5.6.7

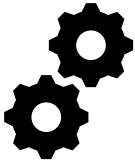


Type: Patch

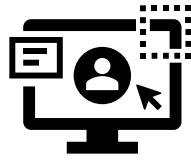


Date: 25/08/2021

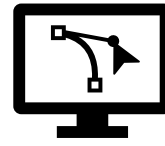
Release Artifacts



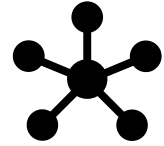
AE Engine
WAR



AEUI
WAR



Process Studio*
Zip



Integration
WARS

* AutomationEdge Server V5.6.7 is compatible only with Process Studio V 5.6.x so ensure that you have a compatible Process Studio version installed

Browsers Supported for AEUI



57 & above



80 & above



11



52 & above

You can download earlier version Release Notes by clicking on the respective versions:
[5.6.0](#), [5.6.1](#), [5.6.2](#), [5.6.3](#), [5.6.4](#), [5.6.5](#), [5.6.6](#)

What's New?!



For better understanding a feature, [*GUIDE NAME* | *PAGE NUMBER*] of the current version of guide has been provided after the points (wherever applicable) for the reader to refer to.

- AutomationEdge Server (Engine & UI):
 - Added ability to add *Exceptions* (Entities which should bypass Proxy) in semicolon separated format under the “*Proxy Server*” new proxy option for users in AEUI while Agent download [**AutomationEdge User Guide | 268**]



Fixed Issues

- Fixed the issue where users could not publish to the server or update their workflows which contained Office365 steps using a refresh token.
- Fixed the issue where an agent which was previously downloaded and configured to run without proxy would run with proxy once AutomationEdge instance was updated.



Security Enhancements

- No security enhancements in this release



Known Issues / Limitations

- The Status of Integration Services is displayed as UNKNOWN intermittently (for few seconds), on AutomationEdge UI, although the Service may be running.
- The *Time Zone* option under the *Polling Schedule* section of Integration > Type Configuration menu is disabled. The default time zone of the machine on which integration service is deployed will be used for Polling schedule
- A redundant update status message is displayed for all existing plugins in PS after the *Plugin Sync* operation if any plugin is assigned to or removed from a tenant.
- Copy Query option in Add/Edit Templates in Reports tab on AEUI does not work for IE browser.
- No email notification is sent when a workflow configuration parameter is removed; even after configuring '*Workflow Create and Update*' notification in Settings menu in AEUI
- An incorrect the email notification – 'Parameter is added' instead of 'Parameter is changed' – is sent when the value of a configuration parameter is changed
- While Downloading Requests from AEUI, Created and Completed dates need to be formatted as 'Date' in Microsoft Excel in the downloaded CSV file
- WebGUI workflows must always be marked as sequential. If one of the WebGUI automation workflows running as non-sequential workflow is terminated, then all the subsequent requests remain in *New* state.
- Agents will acquire Tenant level proxy settings (If Any) during upgrades discarding the Agent level proxy settings. The required changes need to be done manually
- Agent restart features in not supported on Linux based OS
- Agent type cannot be changed when the Agent is in *Unknown* state
- Existing workflows will not open if Process Studio Distribution folder path has any special characters.
- SSO authentication is not supported for users with *Sysadmin* role or users who want to use the Process Studio
- Support for Process Studio on MacOS has been suspended
- Desktop/Surface UI Automation is not supported in Linux based OS
- When adding exceptions in AEUI for *Proxy Server* option, users must ensure the following:
 - No wildcards are used
 - Port numbers are not added along with the host name.
 - Only semicolon (;) is used as separator and spaces are not present in exception Entry
 - Only domain names are used and are not prefixed with www or http://https:.
 - Currently, the list of exceptions entered while downloading the agent is not stored anywhere and needs to be tracked and maintained manually outside the system



Contact Details

AutomationEdge Technologies Inc



General: info@automationedge.com

Support: support@automationedge.com

Trainings: training.support@automationedge.com



Website: <https://automationedge.com>



India: +91-20-6632-1000

USA: +1-281-220-1057